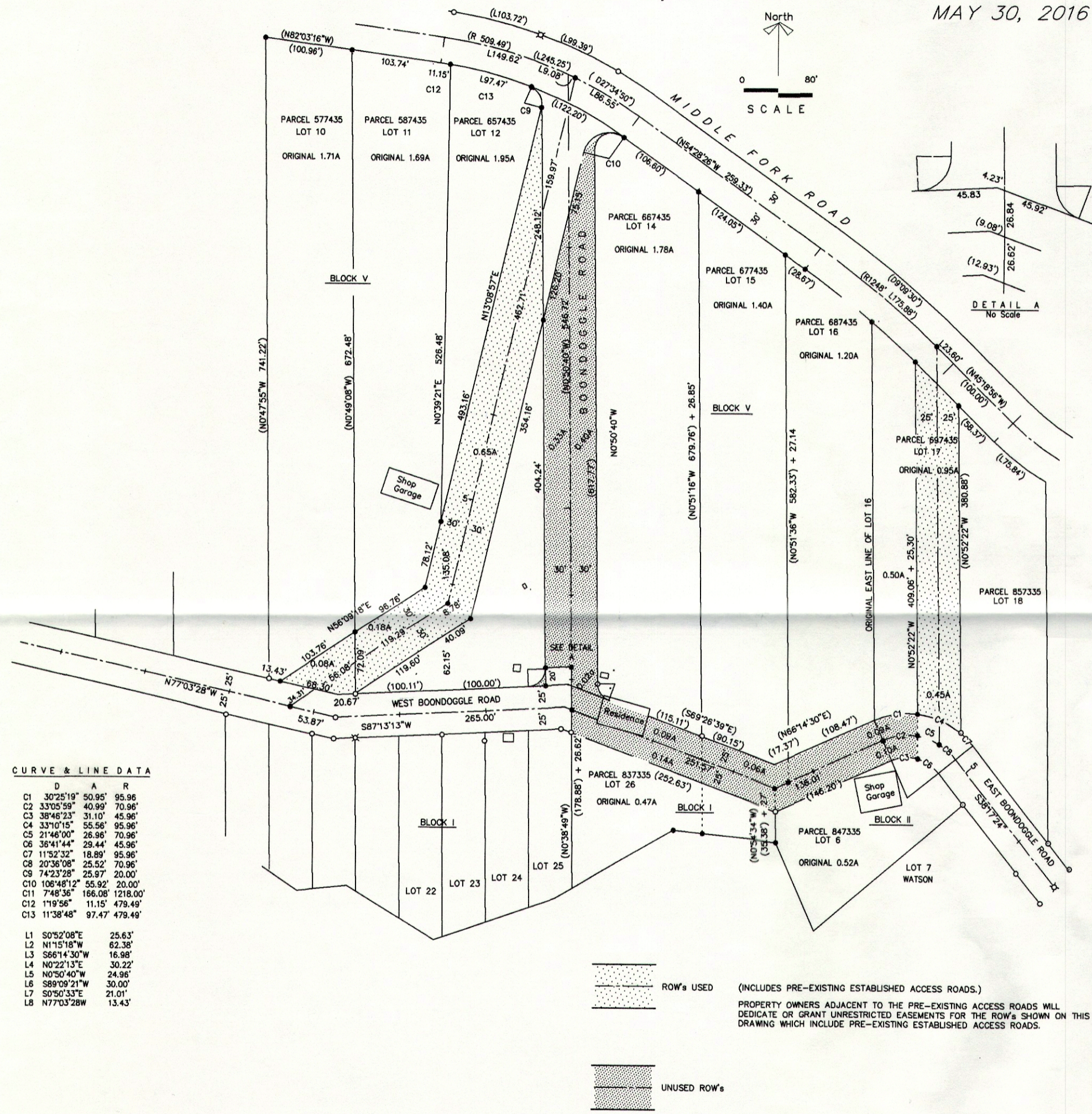


BEFORE PROPOSED ADJUSTMENTS TO A PORTION OF THE TEANAWAY WAGON WHEEL PLAT CONSISTING OF LOT LINE ADJUSTMENTS, Lots 10, 11, 12, 14, 15, 16, 17, Block 5; Lot 26, Block 1; Lot 6, Block 2 and ADJUSTMENTS to the location of ROW's FOR PORTIONS OF BOONDOGGLE ROAD and EAST BOONDOGGLE ROAD in Parts of the SE4NW4; SWANE4; NE4SW4; NW4SE4; S26, T21N R15E WM Book 6 of Plats, Pages 30 - 43; Records of Kittitas County, November 1973

MAY 30, 2016



CURVE & LINE DATA

D	A	R
C1	30°25'18"	50.95' 95.96'
C2	33°05'59"	40.99' 70.96'
C3	38°46'23"	31.10' 45.96'
C4	33°10'15"	55.56' 95.96'
C5	21°46'00"	26.96' 70.96'
C6	36°41'44"	29.44' 45.96'
C7	11°32'32"	18.89' 95.96'
C8	20°36'08"	25.52' 70.96'
C9	74°23'28"	25.97' 20.00'
C10	108°48'12"	55.92' 20.00'
C11	74°8'36"	166.08' 1218.00'
C12	119°56'	11.15' 479.49'
C13	11°38'48"	97.47' 479.49'

L1	S0°52'08"E	25.63'
L2	N1°15'18"W	62.38'
L3	S66°14'30"W	16.98'
L4	N0°21'37"E	30.22'
L5	N0°50'40"W	24.96'
L6	S89°09'21"W	30.00'
L7	S0°50'33"E	21.01'
L8	N77°03'28"W	13.43'

ROW's USED (INCLUDES PRE-EXISTING ESTABLISHED ACCESS ROADS.)
 PROPERTY OWNERS ADJACENT TO THE PRE-EXISTING ACCESS ROADS WILL DEDICATE OR GRANT UNRESTRICTED EASEMENTS FOR THE ROW'S SHOWN ON THIS DRAWING WHICH INCLUDE PRE-EXISTING ESTABLISHED ACCESS ROADS.

UNUSED ROW'S

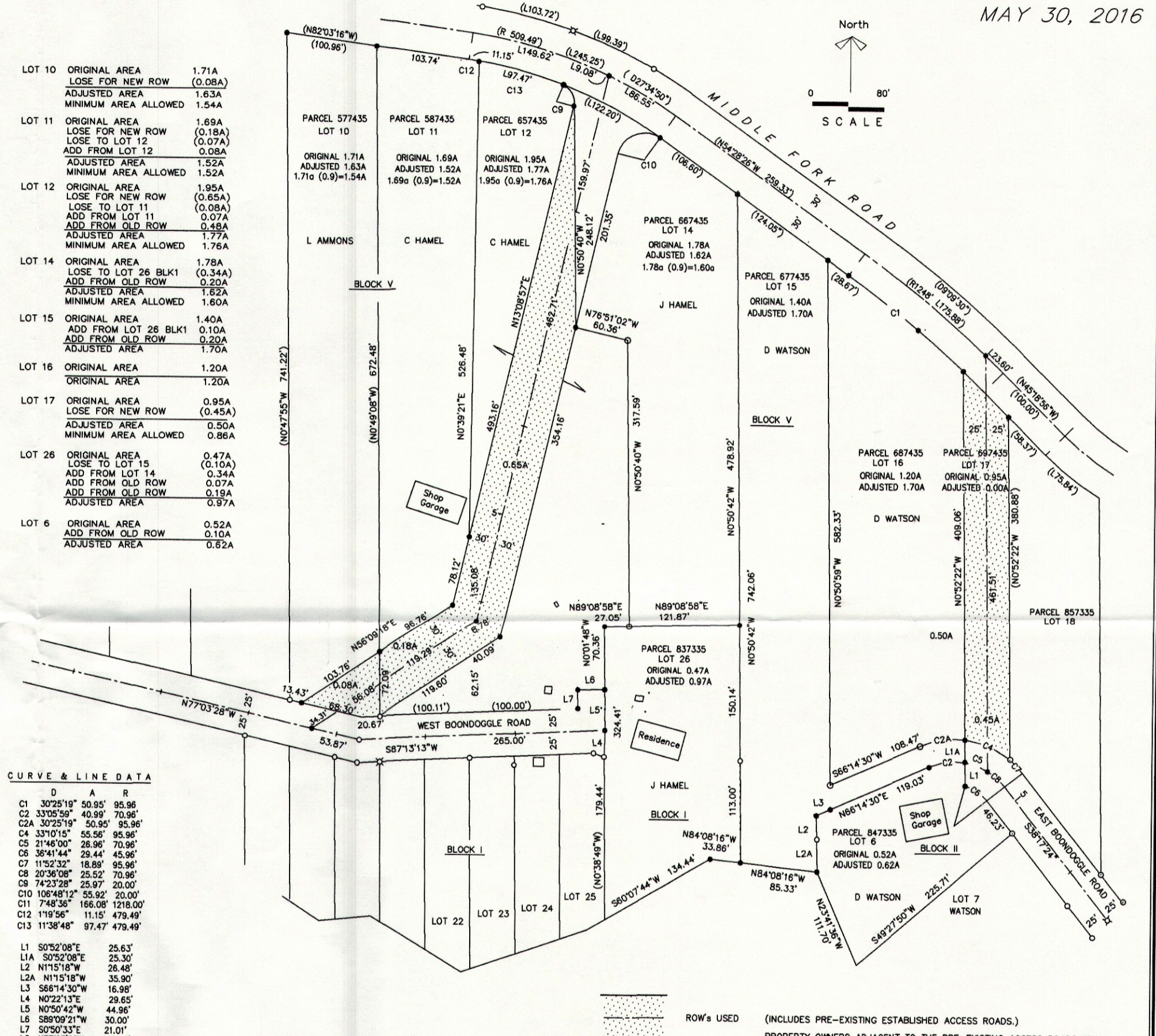
SURVEYOR'S CERTIFICATE
 This map correctly represents a survey made by me in conformance with the requirements of the Survey Recording Act at the request of

BOB'S L L C
 Professional Land Surveying
 4201 HWY 970, CLE ELUM, WA 98922
 509 674 5551

ROBERT L. BAILEY, PLS/PE 9743

AFTER PROPOSED ADJUSTMENTS TO A PORTION OF THE TEANAWAY WAGON WHEEL PLAT CONSISTING OF LOT LINE ADJUSTMENTS, Lots 10, 11, 12, 14, 15, 16, 17, Block 5; Lot 26, Block 1; Lot 6, Block 2 and ADJUSTMENTS to the location of ROW's FOR PORTIONS OF BOONDOGGLE ROAD and EAST BOONDOGGLE ROAD in Parts of the SE4NW4; SWANE4; NE4SW4; NW4SE4; S26, T21N R15E WM Book 6 of Plats, Pages 30 - 43; Records of Kittitas County, November 1973

MAY 30, 2016



CURVE & LINE DATA

D	A	R
C1	30°25'18"	50.95' 95.96'
C2	33°05'59"	40.99' 70.96'
C3	38°46'23"	31.10' 45.96'
C4	33°10'15"	55.56' 95.96'
C5	21°46'00"	26.96' 70.96'
C6	36°41'44"	29.44' 45.96'
C7	11°32'32"	18.89' 95.96'
C8	20°36'08"	25.52' 70.96'
C9	74°23'28"	25.97' 20.00'
C10	108°48'12"	55.92' 20.00'
C11	74°8'36"	166.08' 1218.00'
C12	119°56'	11.15' 479.49'
C13	11°38'48"	97.47' 479.49'

L1	S0°52'08"E	25.63'
L1A	S0°52'08"E	25.30'
L2	N1°15'18"W	26.48'
L2A	N1°15'18"W	35.90'
L3	S66°14'30"W	16.98'
L4	N0°22'13"E	29.65'
L5	N0°50'42"W	44.96'
L6	S89°09'21"W	30.00'
L7	S0°50'33"E	21.01'
L8	N77°03'28"W	13.43'

ORIGINAL PARCEL NUMBER	ORIGINAL ACREAGE	NEW ACREAGE
577435	1.71A	1.63A
587435	1.69A	1.52A
657435	1.95A	1.77A
667435	1.78A	1.62A
67435	1.40A	1.70A
687435	1.20A	1.70A
877435	0.95A	0.00A
87335	0.47A	0.97A
847335	0.52A	0.62A

ADJUST A TOTAL OF 1.23 ACRES FROM THE UNUSED ROW TO THE FOLLOWING LOTS	ADJUST A TOTAL OF 1.36 ACRES FOR NEW ROW FROM THE FOLLOWING LOTS
LOT 12	0.48 A
LOT 14	0.20 A
LOT 15	0.20 A
LOT 26	0.25 A
LOT 6	0.10 A
LOT 10	0.08 A
LOT 11	0.18 A
LOT 12	0.66 A
LOT 17	0.45 A
LOT 17	1.36 A

SURVEYOR'S CERTIFICATE
 This map correctly represents a survey made by me in conformance with the requirements of the Survey Recording Act at the request of

BOB'S L L C
 Professional Land Surveying
 4201 HWY 970, CLE ELUM, WA 98922
 509 674 5551

ROBERT L. BAILEY, PLS/PE 9743

